



# First-Mover Advantage In Quebec's New Lithium Frontier - Nunavik

*Powering Up The North!*

CSE: **ERKA** | OTCQB: **UREKF** | FSE: **S580** | [EurekaLithiumCorp.com](http://EurekaLithiumCorp.com)

Q3 2023

# Forward-Looking Statements

---

*Certain information contained in this document may include “forward-looking information” within the meaning of applicable Canadian securities legislation. Forward-looking information may include, among others, statements regarding the future plans, costs, objectives or performance of Eureka Lithium Corp., or the assumptions underlying any of the foregoing. In this document, words such as “may”, “would”, “could”, “will”, “likely”, “believe”, “expect”, “anticipate”, “intend”, “plan”, “estimate” and similar words and the negative form thereof are used to identify forward-looking statements. Forward-looking statements should not be read as guarantees of future performance or results, and will not necessarily be accurate indications of whether, or the times at or by which, such future performance will be achieved. No assurance can be given that any events anticipated by the forward-looking information will transpire or occur, including the development of Eureka Lithium’s properties, or if any of them do so, what benefits Eureka Lithium Corp. will derive. Forward-looking information is based on information available at the time and/or management’s good-faith belief with respect to future events and are subject to known or unknown risks, uncertainties, assumptions and other unpredictable factors, many of which are beyond Eureka Lithium’s control.*

*These risks, uncertainties and assumptions include, but are not limited to, those described under “Financial Instruments” and “Risk and Uncertainties in Eureka Lithium’s Annual Report for the fiscal year ended December 31, 2022, a copy of which is available on SEDAR at [www.sedar.com](http://www.sedar.com) and could cause actual events or results to differ materially from those projected in any forward-looking statements. Eureka Lithium does not intend, nor does Eureka Lithium undertake any obligation, to update or revise any forward-looking information contained in this document to reflect subsequent information, events or circumstances or otherwise, except if required by applicable laws.*

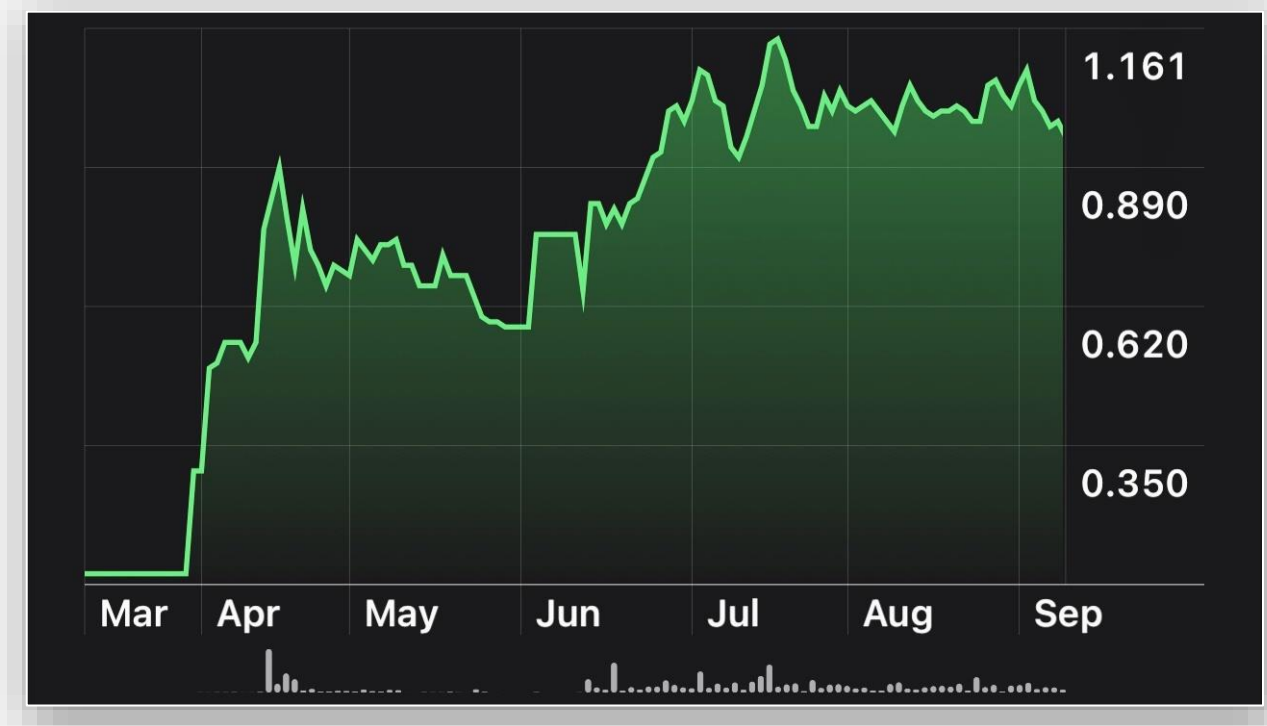
## **Qualified Person**

*The scientific and technical content of this presentation has been reviewed and approved by Afzaal Pirzada, P. Geo., who is a “qualified person” as defined by National Instrument 43-101 – Standards of Disclosure for Mineral Projects.*

# Share Structure

Powering Up The North!

CSE: **ERKA**



Year High: \$1.20 | Year Low: \$0.095

## Share Structure as of Sept 11, 2023

<b>Total Outstanding</b>	<b>42,683,800</b>
Warrants	11,289,246
Options	825,000
RSUs	320,000
<b>Fully Diluted</b>	<b>55,118,046</b>

## CEO Message



“

*The Quebec lithium rush is headed north to the massive under-explored Nunavik region covering the top third of the province. Geologically, this is a rich area with two operating nickel mines and the best lithium and cesium geochemistry in all of Quebec. Eureka has assembled a Nunavik-leading 1,408 sq. km land package with drilling targeted for this summer.”*

- Jeffrey Wilson, CEO Eureka Lithium

Canada's Most  
Famous  
Prospector

Yukon Gold  
Rush

Newfoundland  
Gold Rush

Nunavik 2023  
Lithium Rush?



## Eureka's "Unparalleled Opportunity"

### **The Prospector**

“

*We're following the science here and it's extremely compelling: We're not going after old showings or a 'needle in a haystack'. Nunavik is virgin territory, never previously explored specifically for lithium, and this massive area comprising the top third of Quebec could prove to be the 'haystack' of mineralized lithium systems in all of Canada.”*

*- Shawn Ryan, Technical Advisor*



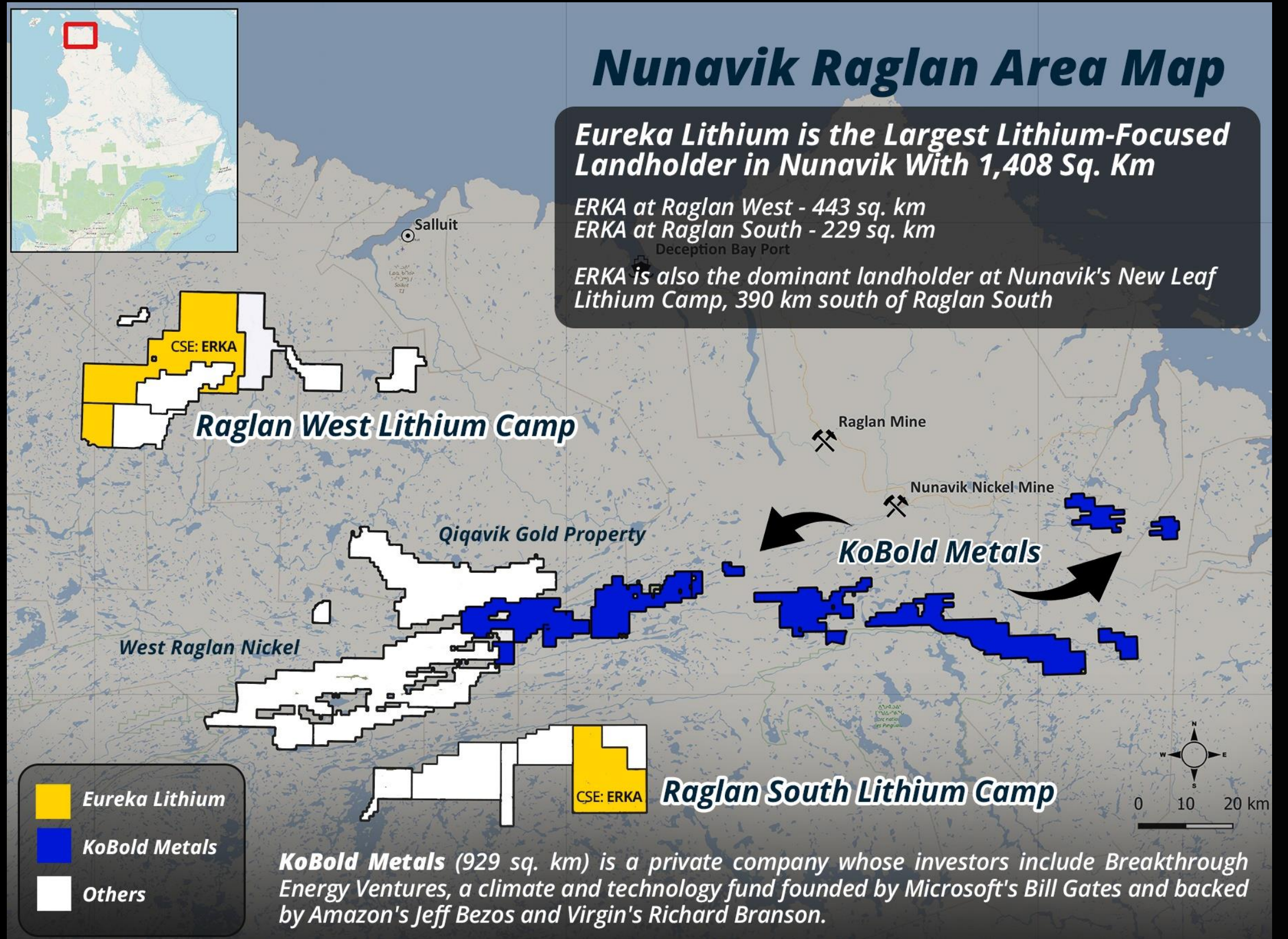
## Shawn Ryan – Canada’s Most Famous Prospector

- ✓ *A global leader in his field*, Shawn Ryan’s research and prospecting techniques have had a major impact on the Canadian resource sector this century
- ✓ *Ryan single-handedly* kicked off the second major gold rush in Yukon mining history in 2009, leading to his selection as PDAC’s Prospector-of-the-Year in 2011
- ✓ *Ryan’s expertise* led to the discovery of several important deposits in the Yukon including the multi-million ounce Coffee Project acquired by Goldcorp for \$520 million (CDN) in 2016 Kaminak Gold buyout and now being steered toward production by Newmont
- ✓ In 2015, Ryan turned his attention to Newfoundland where his groundbreaking research and reinterpretations helped turn the island into one of the most exciting jurisdictions in the world for new high-grade gold discoveries
- ✓ The 2020-2021 Newfoundland staking rush, driven by Ryan, could prove to be just the beginning of a generational gold discovery cycle on the island
- ✓ In 2022, Ryan’s continued Newfoundland research expanded the potential of the Bay St. George Salt District and the underground energy storage opportunity
- ✓ In 2023, after extensive research, Ryan outlined the potential for the discovery of high-grade spodumene-bearing lithium pegmatite deposits in Nunavik, Quebec



# Billionaires Invested in Nunavik

Bill Gates, Jeff Bezos and Richard Branson are among key investors in battery metals-focused and privately-held KoBold Metals which owns 929 sq. km in Nunavik where it will be drilling this summer. KoBold's most recent raise was for \$200 million (U.S.).



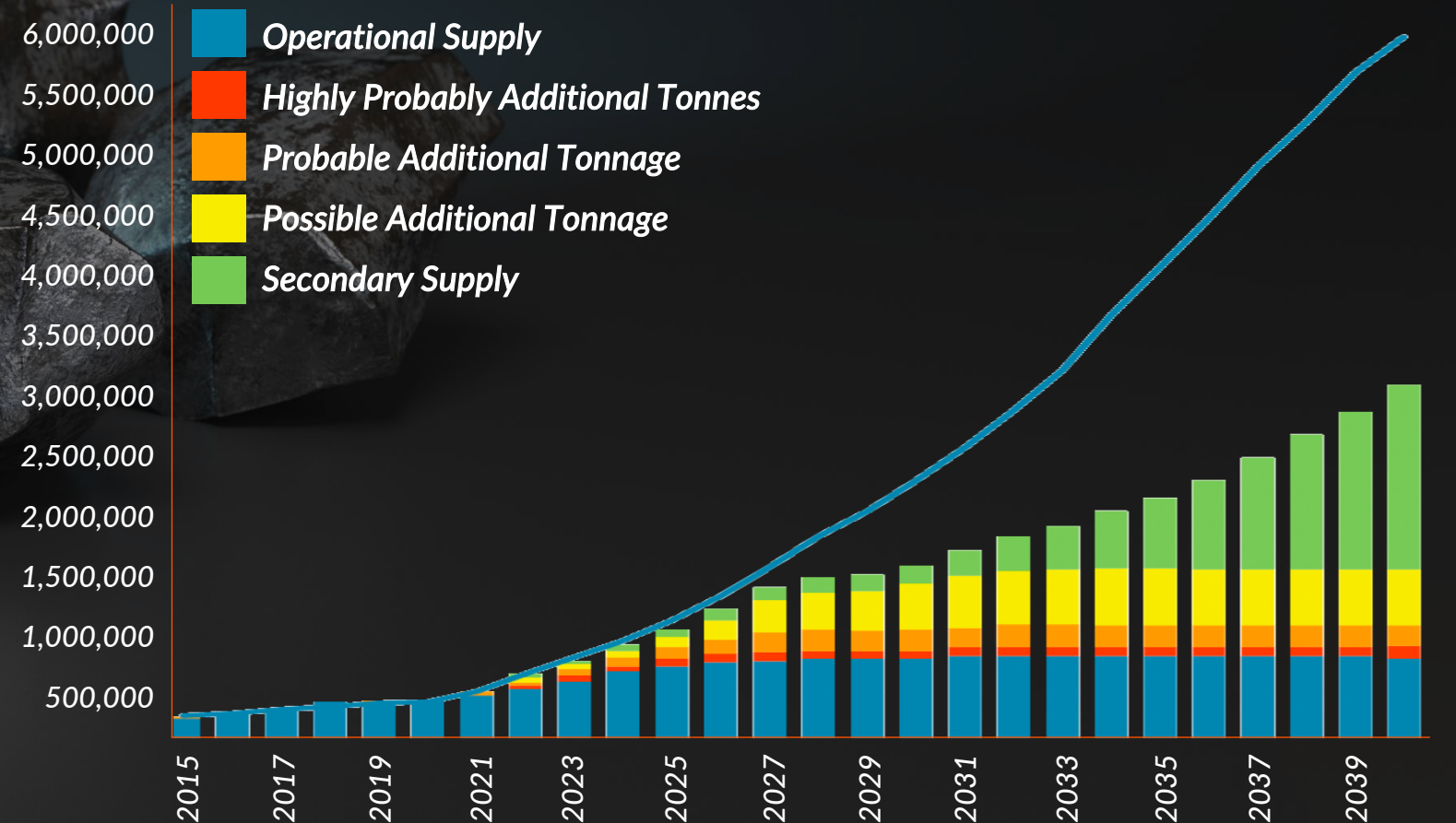


## Where Is All The Lithium Going To Come From?

Lithium is a critical mineral for the production of electric vehicles and multiple other applications that are driving the global energy transition.

There is currently a “disconnect” between the immense increase in battery metals demand and the supply that’s going to be required over the next decade to meet that demand.

Demand of ~6Mt LCE in 2040 vs. operational and probable supply of ~0.9Mt



Source: World Economic Forum “2030 Vision for a Sustainable Battery Chain”



# EV Revolution Intensifies

**Electric Vehicles' Share of Total Passenger Vehicle Sales Expected to Top 50% by 2030 (USA)**



Source: BloombergNEF, U.S. Global Investors

- The Biden administration through the EPA has proposed aggressive new tailpipe emissions standards that, if enforced, would leave carmakers with no other choice than to produce EV's almost exclusively by 2032
- Cutthroat pricing by Tesla – Elon Musk has just slashed prices for Tesla's entry-level SUV's below the average cost of new U.S. cars and trucks – is yet another indicator of a global transformation in the automotive sector that will incentivize the purchase of EV's
- Canada's federal government has handed out up to \$13 billion in production subsidies to Volkswagen for the new EV battery plant it plans to build in St. Thomas, ON – by far the most generous subsidy Canada has ever provided to an automaker for locating a factory here

# The Lithium Challenge and the Opportunity

*Entirely NEW LITHIUM DISTRICTS will need to be discovered - in North America so we aren't relying on China and others - and that means thinking "outside the box".*

*This is what differentiates Eureka Lithium (CSE: ERKA) from an increasingly crowded lithium sector.*

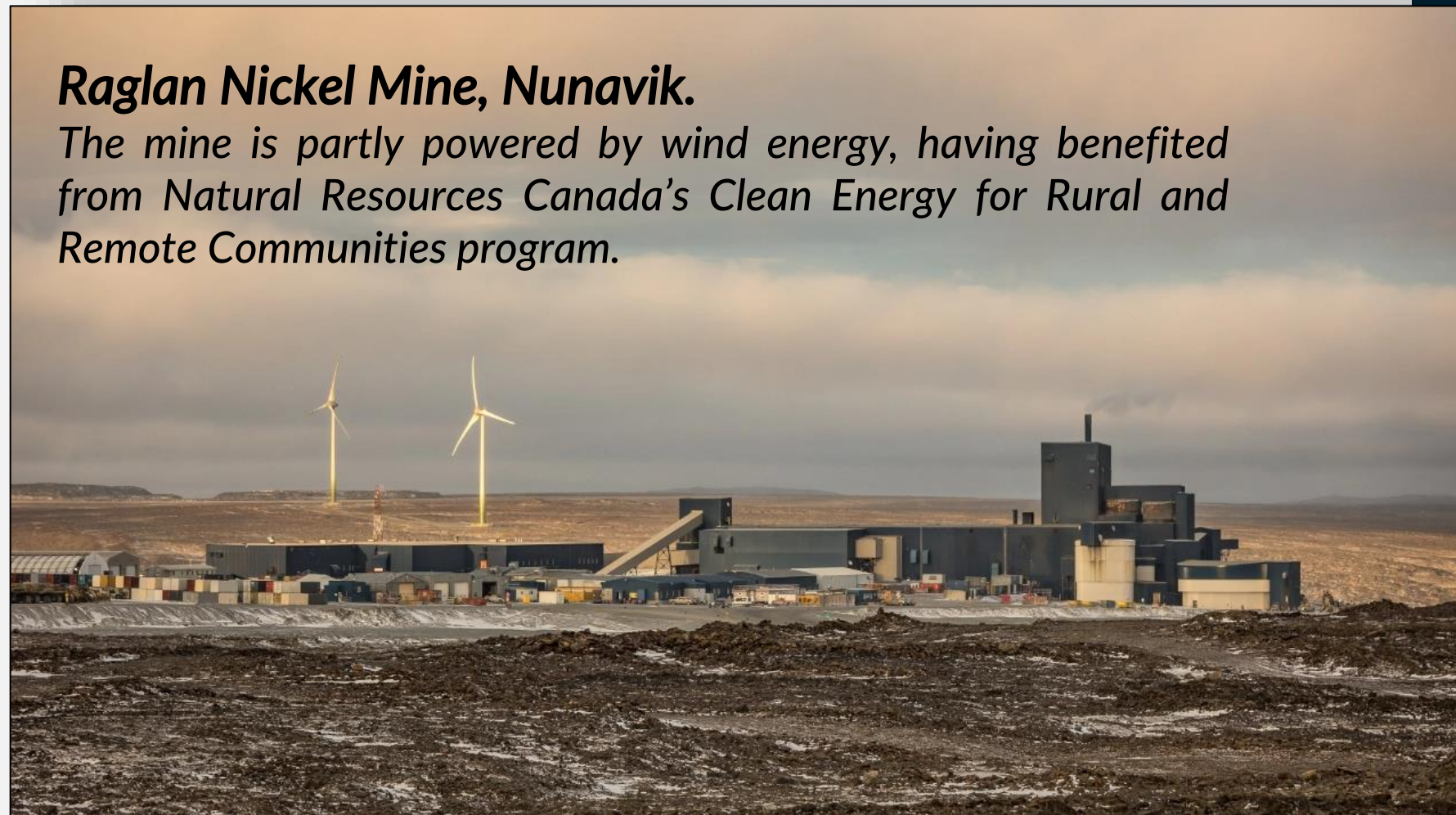
*We are targeting a potentially unparalleled opportunity in the top third of Quebec through rapid state-of-the-art exploration that offers investors immense discovery leverage.*

*And one of the solutions to a lithium supply deficit.*

# Why Nunavik?

## Quebec's Far North

- ✔ *One of world's top 5 nickel belts but no historical exploration for lithium in region despite abundant pegmatite outcrop*
- ✔ *Pro-mining, pro-exploration, and close to tidewater at the deep all-season port facility at Deception Bay*



Deception Bay Port

## Why Nunavik?

- ✓ Large Mineralized Regional Structures
- ✓ Abundant pegmatite outcrop
- ✓ Massive Untapped Exploration Upside

Nunavik covers an area that would make it the 53rd largest country in the world by landmass, bigger than the likes of Japan, Germany, Italy, Sweden, Finland, New Zealand, Ecuador, Burkina Faso, Guinea, Congo, Morocco, Iraq, and many others.



**~500,000**  
Sq. km

**14,000**  
Population

Nunavik means  
**“Great Land”**  
in the local dialect of  
Inuktitut

**Air Link**  
Year-round to all  
villages

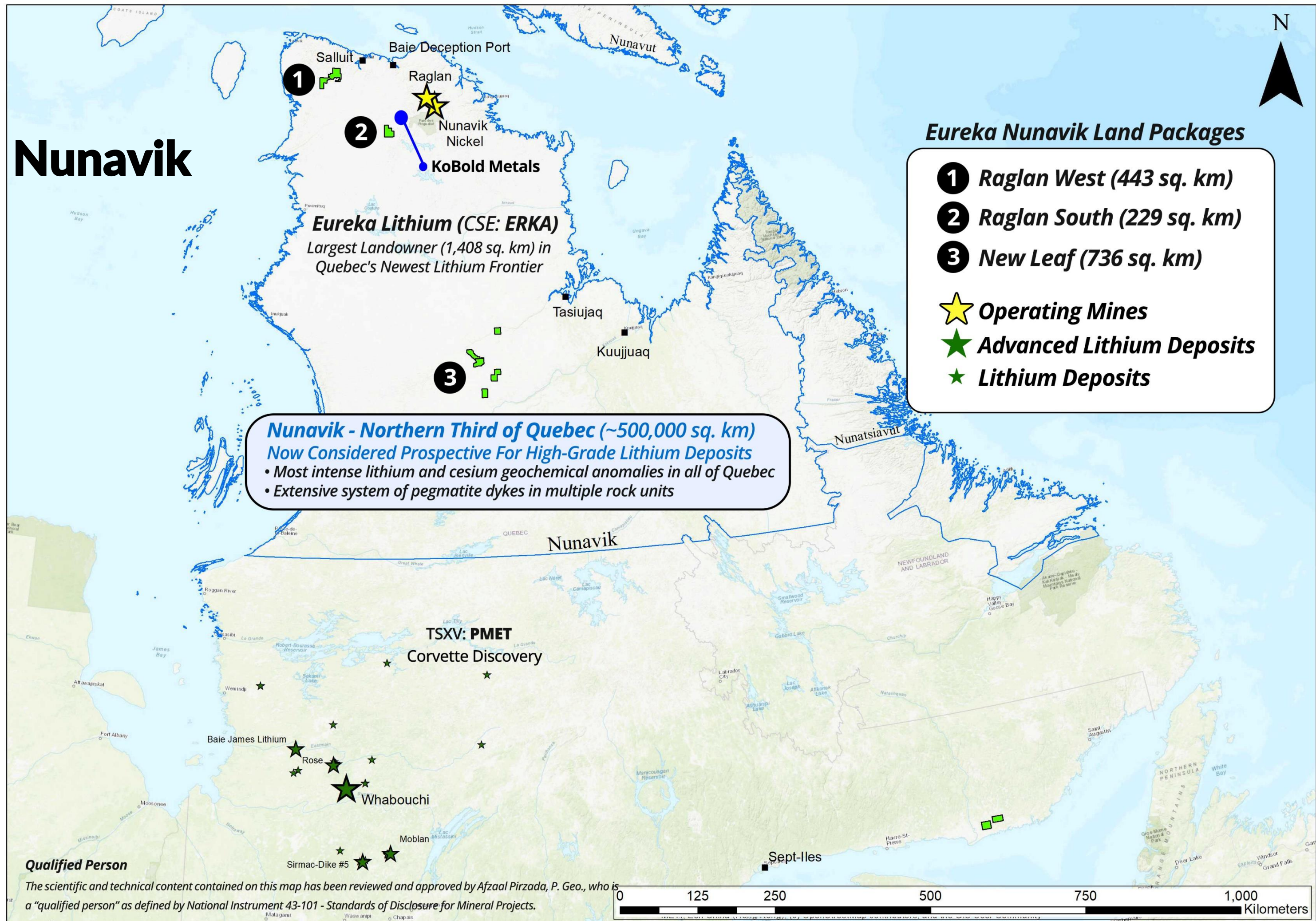
# The Case for Lithium in Nunavik

## Eureka Lithium (formerly Scout Minerals) Secures First Mover Advantage in Quebec's Next Lithium Frontier

News Release - April 13, 2023

- ✓ **Widespread historically mapped pegmatites** in multiple rock units, including mafic gneiss with basaltic amphibolites, never previously sampled
- ✓ **Ideal tectonic setting** for spodumene-bearing pegmatites – geophysics shows favorable structural environment throughout Nunavik for emplacement of pegmatites
- ✓ **Remarkable geochemistry** – unusual abundance of 99th percentile lithium and cesium in lake bottom sediments in Quebec govt. database, far exceeding those in James Bay region
- ✓ **Very anomalous lithium** found in drill core and rock samples in 2022 program at a gold property well outside of the intense signatures for lithium and cesium in lake bottom sediments
- ✓ **Extensive outcrop** will speed up exploration process and allow for drilling of high priority targets in Summer 2023

# Eureka in Nunavik

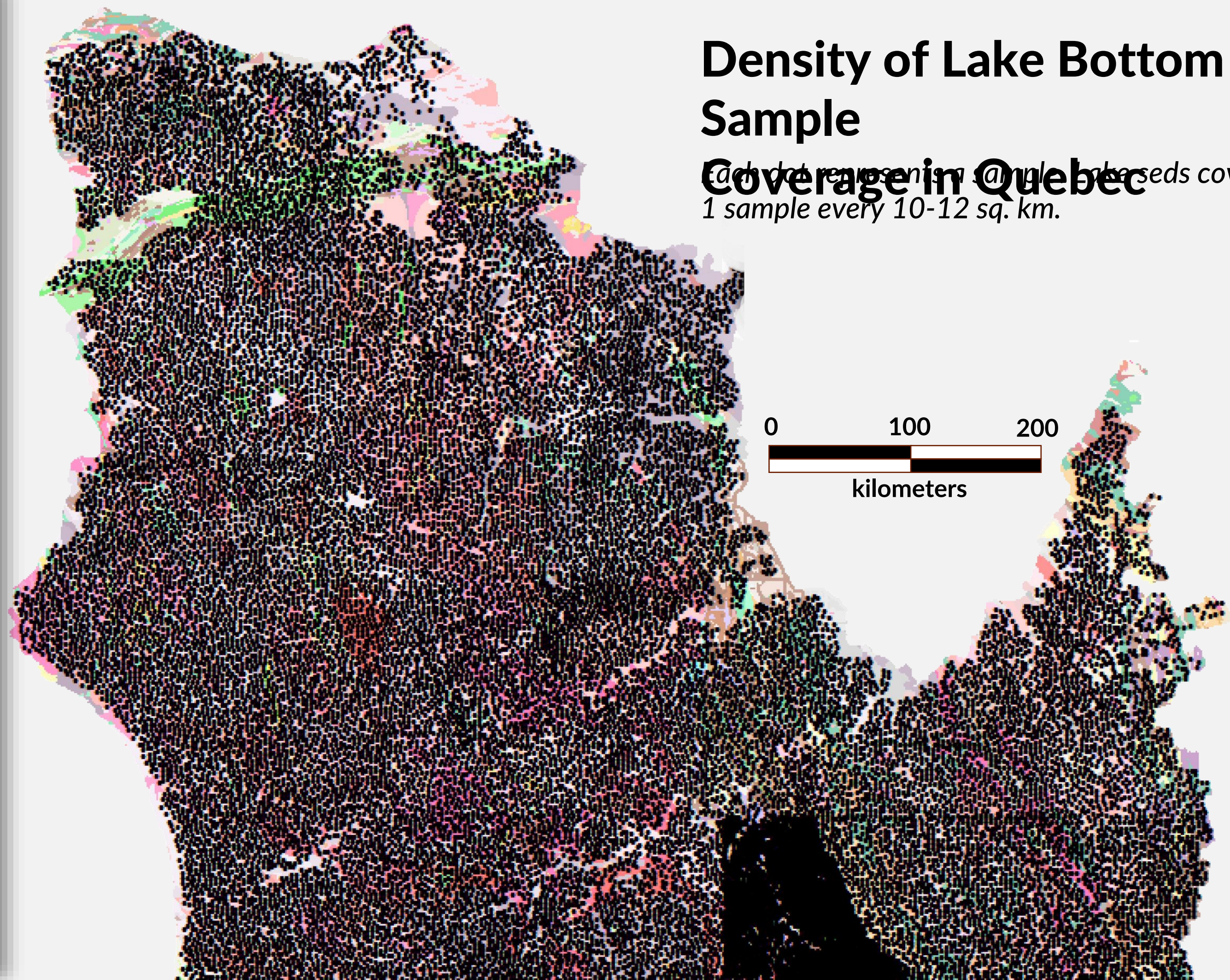


**Qualified Person**

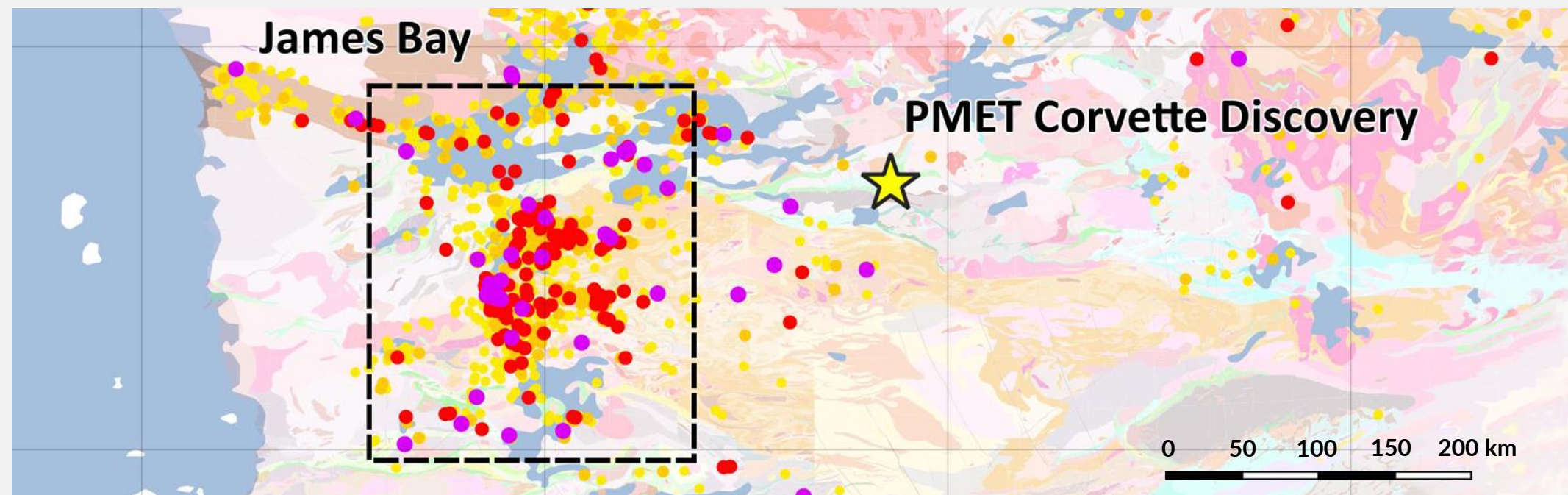
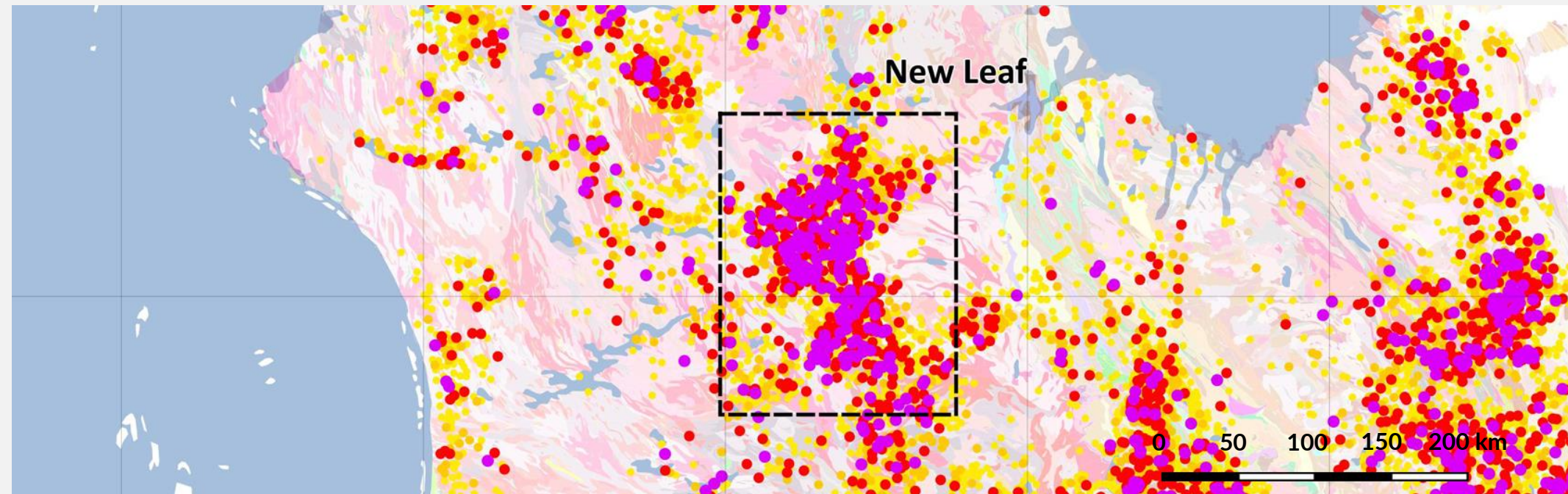
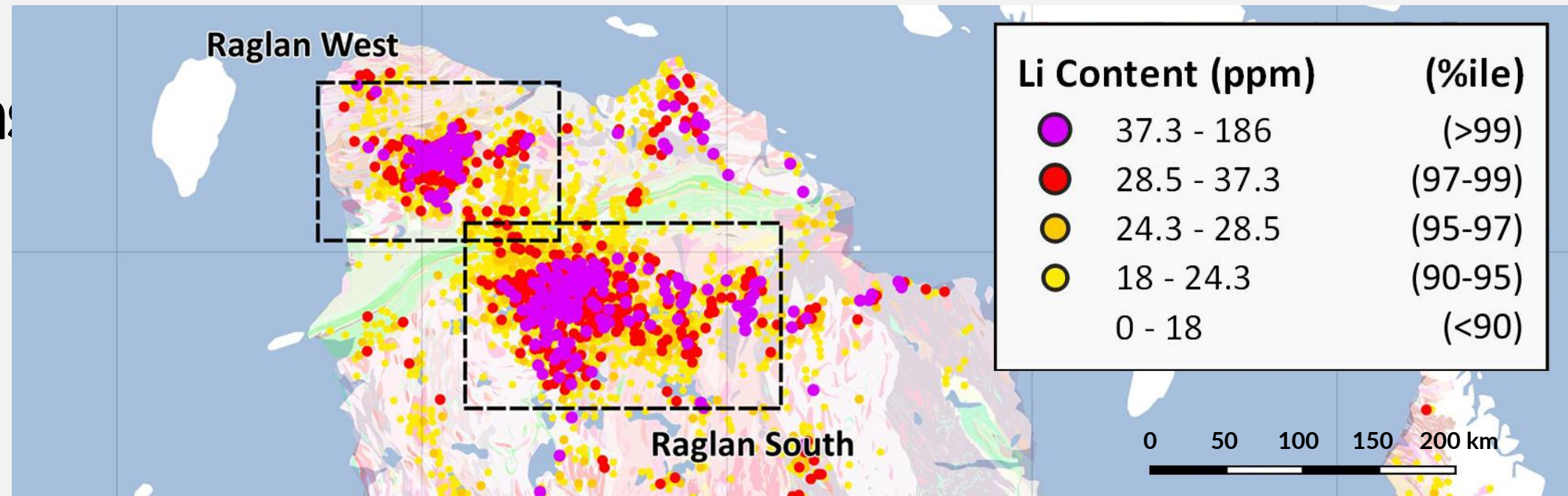
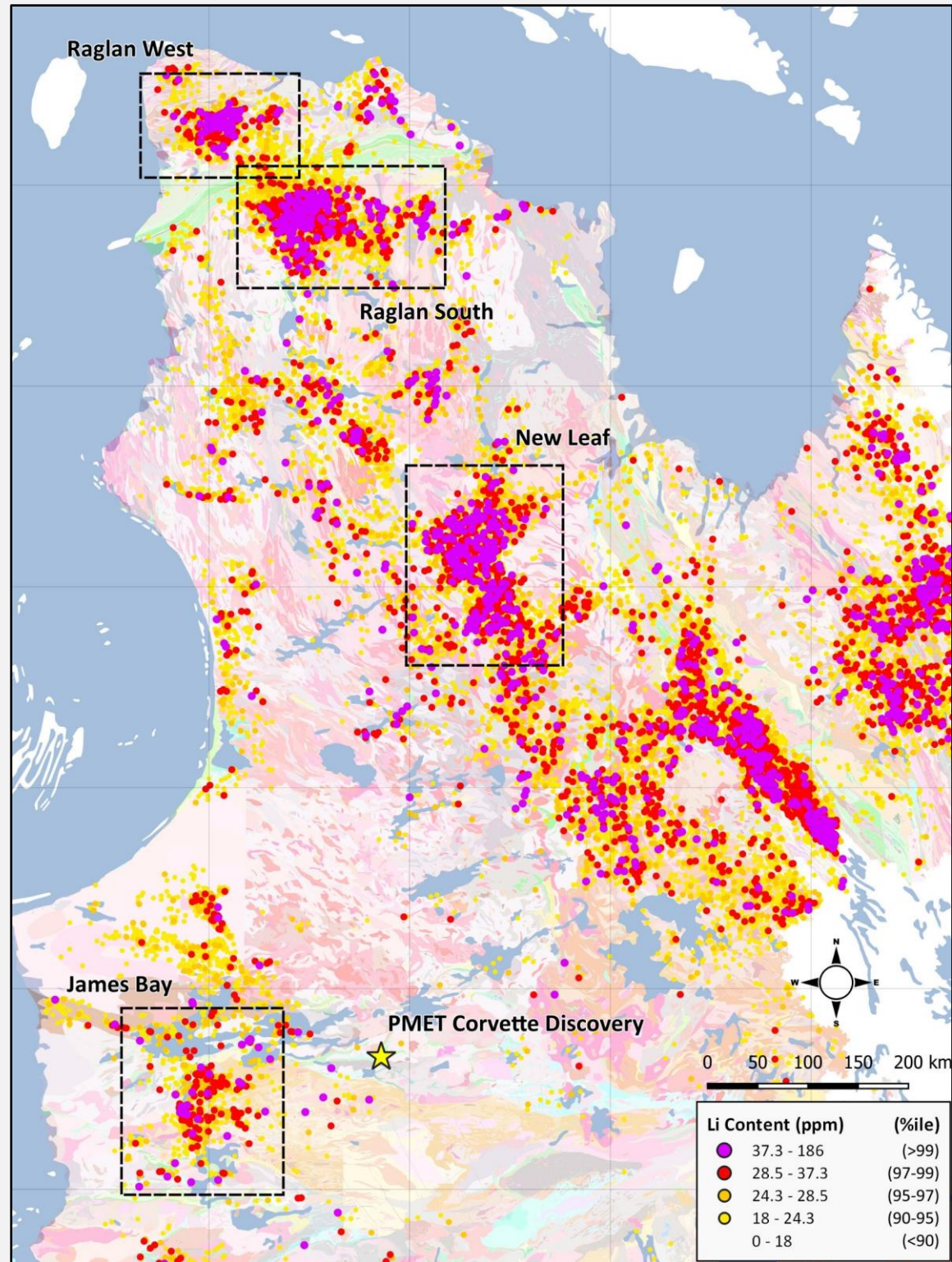
The scientific and technical content contained on this map has been reviewed and approved by Afzaal Pirzada, P. Geo., who is a "qualified person" as defined by National Instrument 43-101 - Standards of Disclosure for Mineral Projects.

# Density of Lake Bottom Sediment Sample Coverage in Quebec

Each dot represents a sample. Lake sediments cover all of Quebec at 1 sample every 10-12 sq. km.



# Li Lake Sediment Comparison







## “Scouting” for Lithium in Nunavik

*A thorough and systematic first-pass exploration program will be executed by a sizable, highly trained team to locate and sample pegmatite outcrops across Eureka Lithium’s vast holdings.*

*Zones of interest will be surveyed by drones producing high-detail imagery and 3-D models to completely map the mineralized systems on surface as they are identified for follow-up program planning during Summer 2023.*

*This strategy will quickly vector toward the most prospective areas for a targeted drilling program Summer 2023 using a lightweight and mobile rotary air blast GT RAB drill for initial drill testing, leading to high-confidence diamond drilling of the top-priority targets.*

**1,408 sq. km**  
*Land Package*

**Positioned**  
*In all 3 major  
prospective lithium  
camps*

*Partnered with*  
**GroundTruth  
Exploration**

**High-Tech  
Exploration**  
*with military precision*



Salluit, Quebec  
Approximately 35 km NE of Raglan West

## Raglan West Lithium Camp

- Eureka owns 100% of a 443 sq. km claim block\*, comprising most of this Camp, beginning approximately 35 km southwest of the community of Salluit which has year-round airport access and a seasonal port for barge landing.
- A total of 61 rock samples were collected at Raglan West and have been submitted for assaying, bringing the total number of samples collected to date to 145 (83 across the 736 sq. km New Leaf Project in southern Nunavik, refer to July 18, 2023 news release);
- Sampling at Raglan West has focused on the two dozen (24) pegmatite units identified to date, with many of these pegmatites hosted in mafic rocks ranging from metabasalts to metadiorites. Pegmatite compositions range from leucogranite to syeno and monzogranite, with accessory minerals such as biotite, muscovite, and garnet;
- The high presence of metamorphosed supracrustal rocks at Raglan West provides a favorable geological setting for LCT (lithium-cesium tantalum) pegmatite systems;
- All Raglan West lake bottom sediment values from the Quebec government database were sampled to provide information on surrounding plutonic rocks. Raglan West contains some of the highest lithium and cesium values in lake bottom sediments (99th percentile) in the Quebec government database (refer to April 19, 2023 news release).

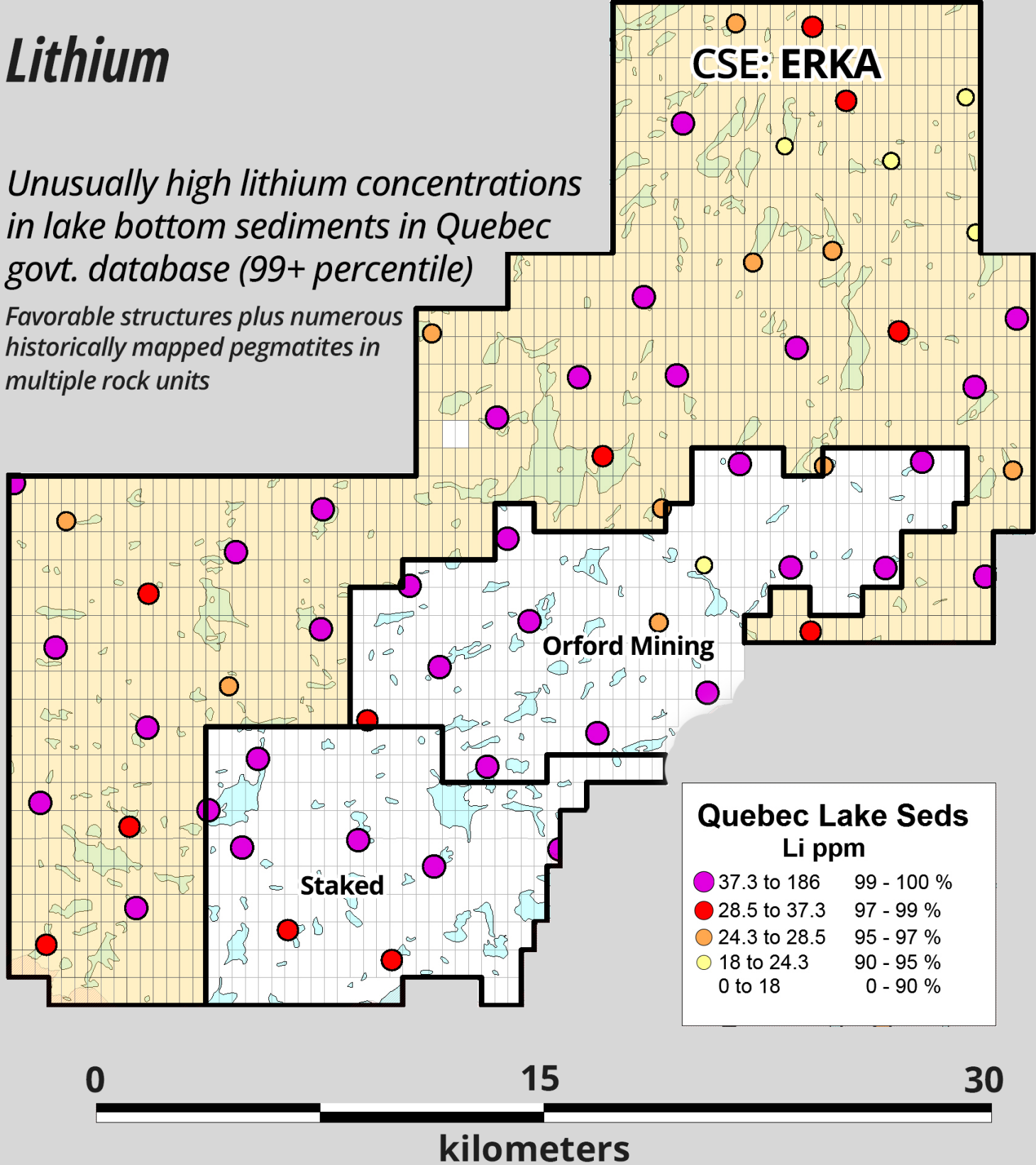
# Raglan West Lithium Camp

Eureka's Claim Block = 443 sq. km

## Lithium

Unusually high lithium concentrations in lake bottom sediments in Quebec govt. database (99+ percentile)

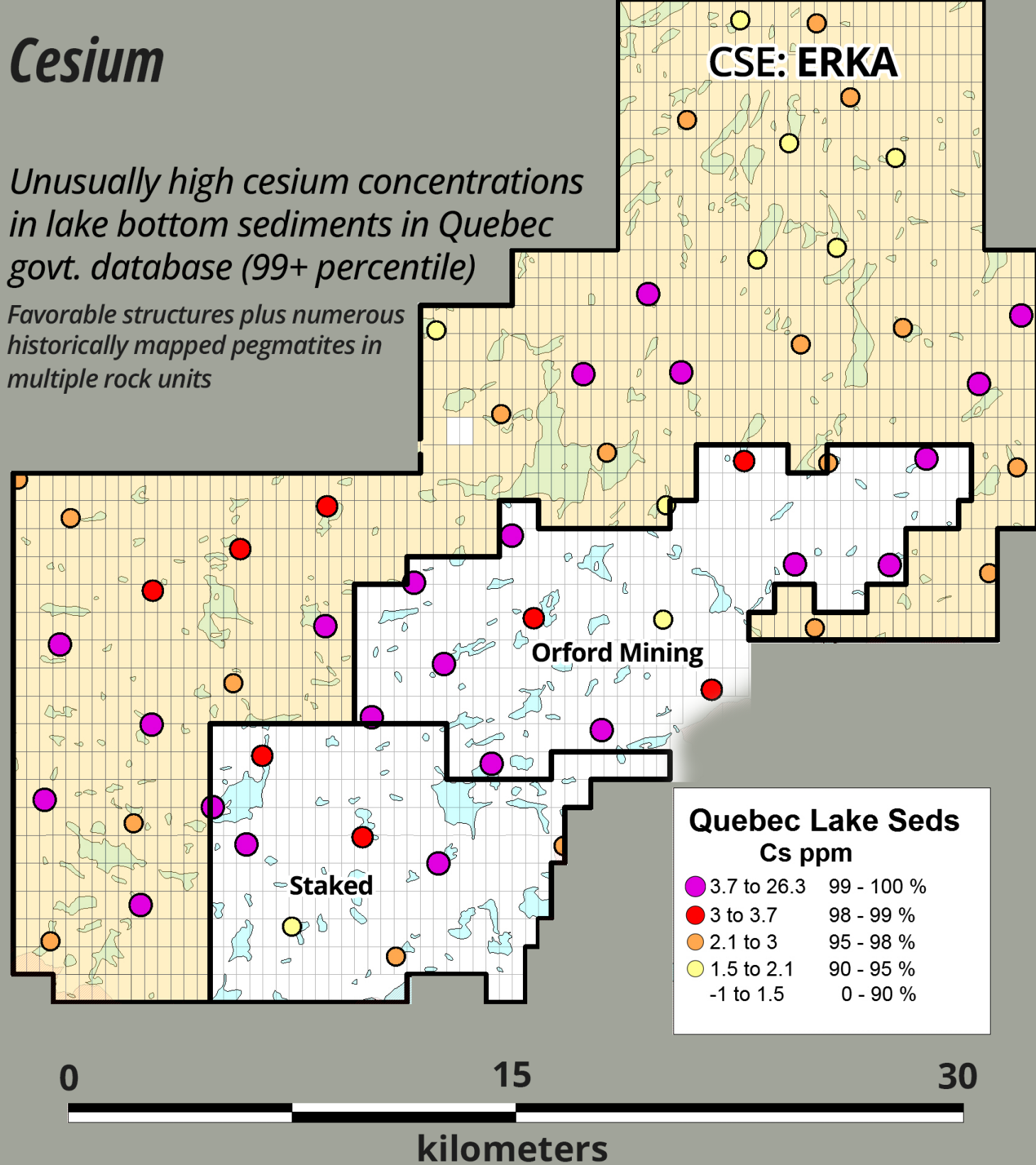
Favorable structures plus numerous historically mapped pegmatites in multiple rock units



## Cesium

Unusually high cesium concentrations in lake bottom sediments in Quebec govt. database (99+ percentile)

Favorable structures plus numerous historically mapped pegmatites in multiple rock units



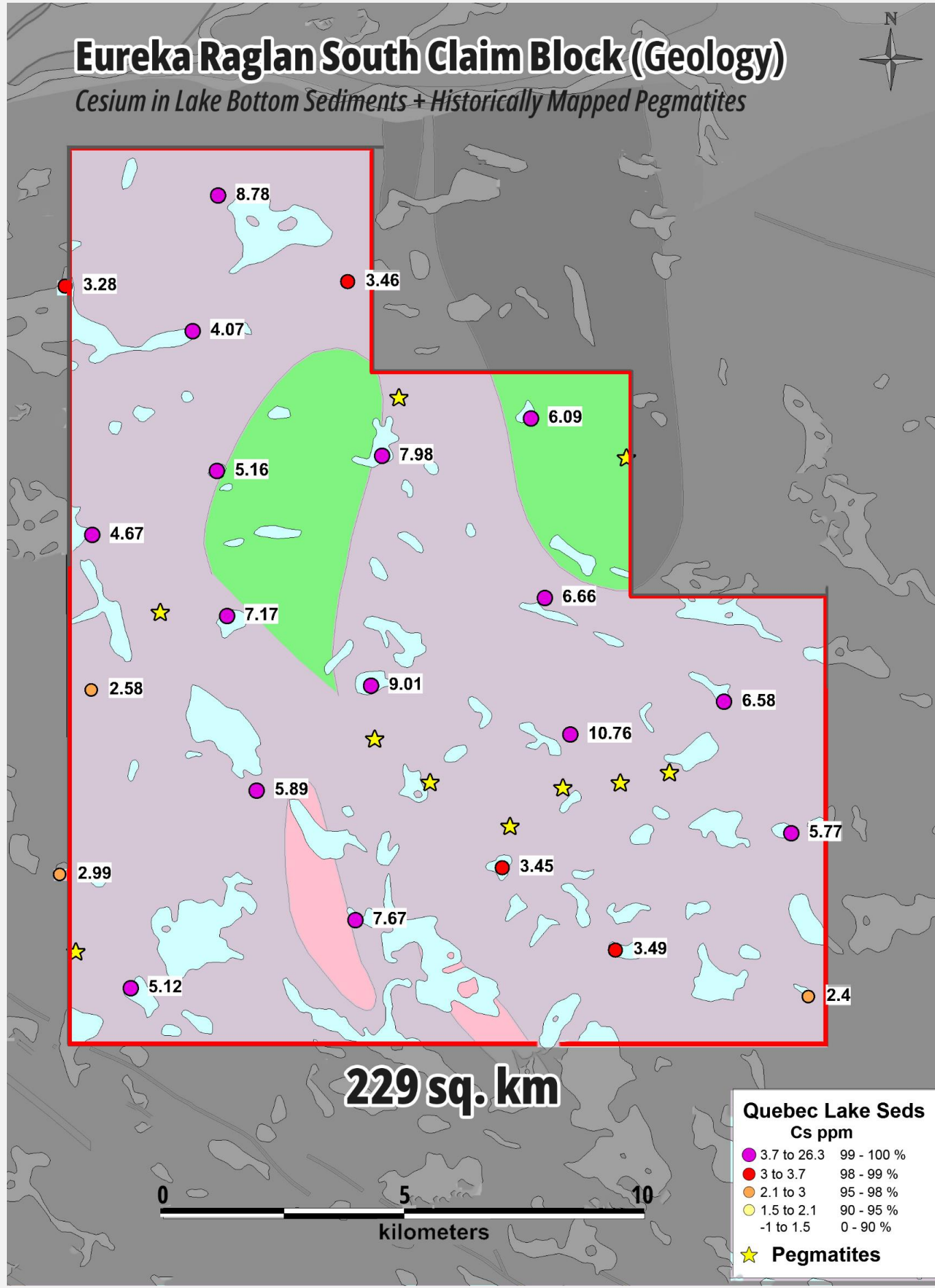
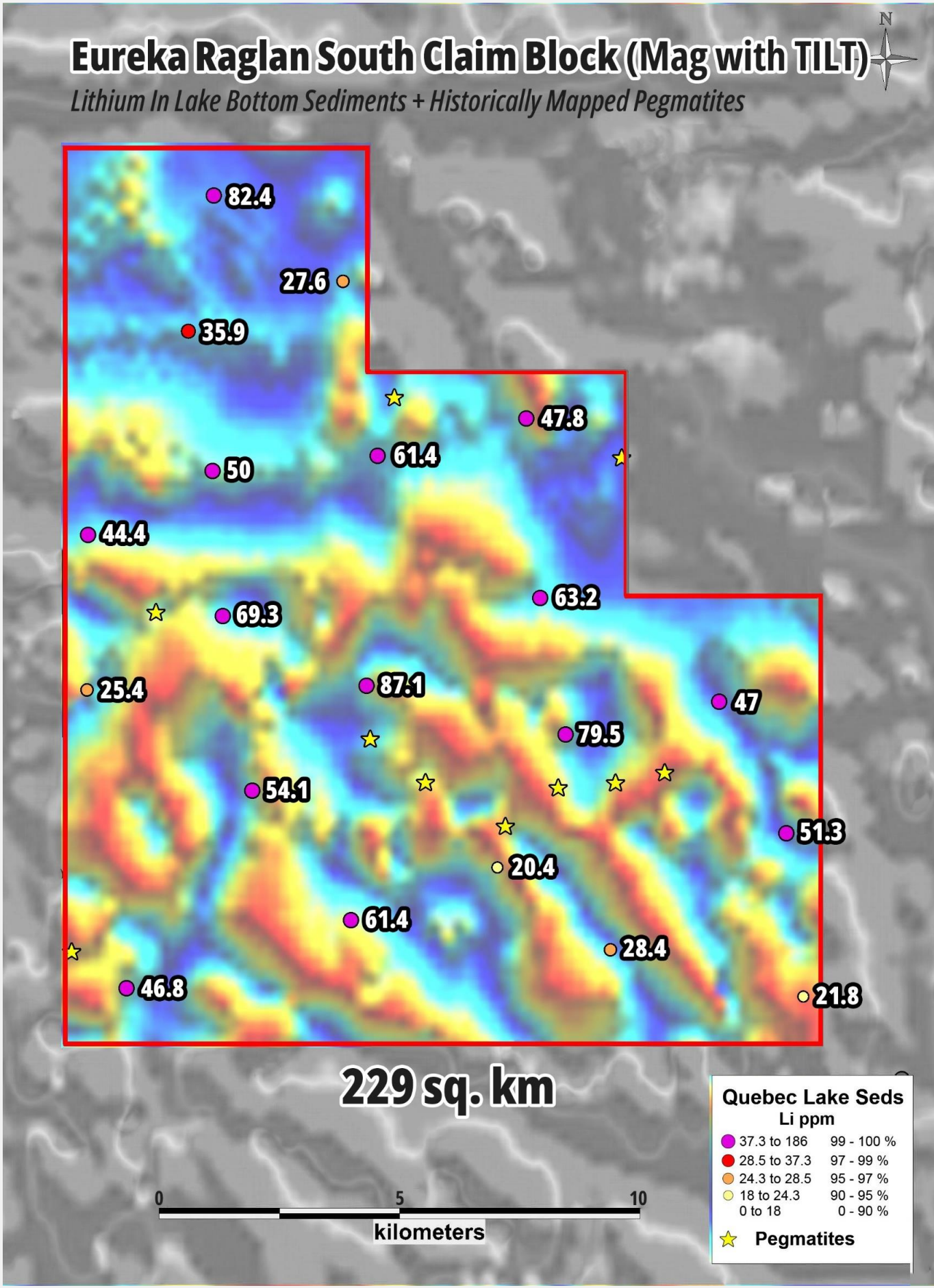


**Canadian Royalties' Nunavik Nickel Mine**  
Approximately 50 km NE of Raglan South

## Raglan South Lithium Camp

- Eureka owns 100% of a 229 sq. km claim block\* in the Raglan South Camp that contains historically mapped pegmatites and a staggering 12.3% of the 99.96 percentile lithium samples (>60 ppm Li) in lake bottom sediments in the Quebec govt. database.
- Geologically, the claim block sits next to three regional intersecting terrain boundaries including a large NW trending magnetic low structure.
- Raglan South is part of the Superior Craton which hosts the majority of known lithium deposits in Canada including those in James Bay and Northwest Ontario. Raglan South is age dated at 2273 Ma, placing it in the U.S. Geological Survey's "sweet spot" for lithium deposits;
- Raglan South has never been systematically explored for lithium until now, but includes an unusually strong lithium-cesium-rubidium anomaly in lake sediments based on 20 widely-spaced historical samples included in the Quebec government database;
- Raglan South contains 12.3% of the 99.96 percentile lithium samples (<60 ppm) in lake sediments in the entire government database, with 7 samples >60 ppm and as high as 79.5 ppm lithium. Fourteen of the 20 Raglan South samples returned >37.3 ppm cesium (as high as 79 ppm cesium) while a 167 ppm rubidium sample is one of the top three rubidium lake sediment values in the government database;
- Raglan South is flanked by a Bouger gravity low, indicative of an intrusive system at depth;
- Very little geological mapping has been carried out at Raglan South but three units have been noted: 1) The Nantais Complex comprising several volcanic packages (metamorphosed mafic to amphibolite); The Lesdiguieres Suite (hornblende-biotite-tonalite with a magmatic, foliated or gneissic texture); La Chevrotiere Suite (porphyritic quartz monzonite granite);
- Multiple pegmatites have been noted at Raglan South.

# Raglan South Lithium Camp





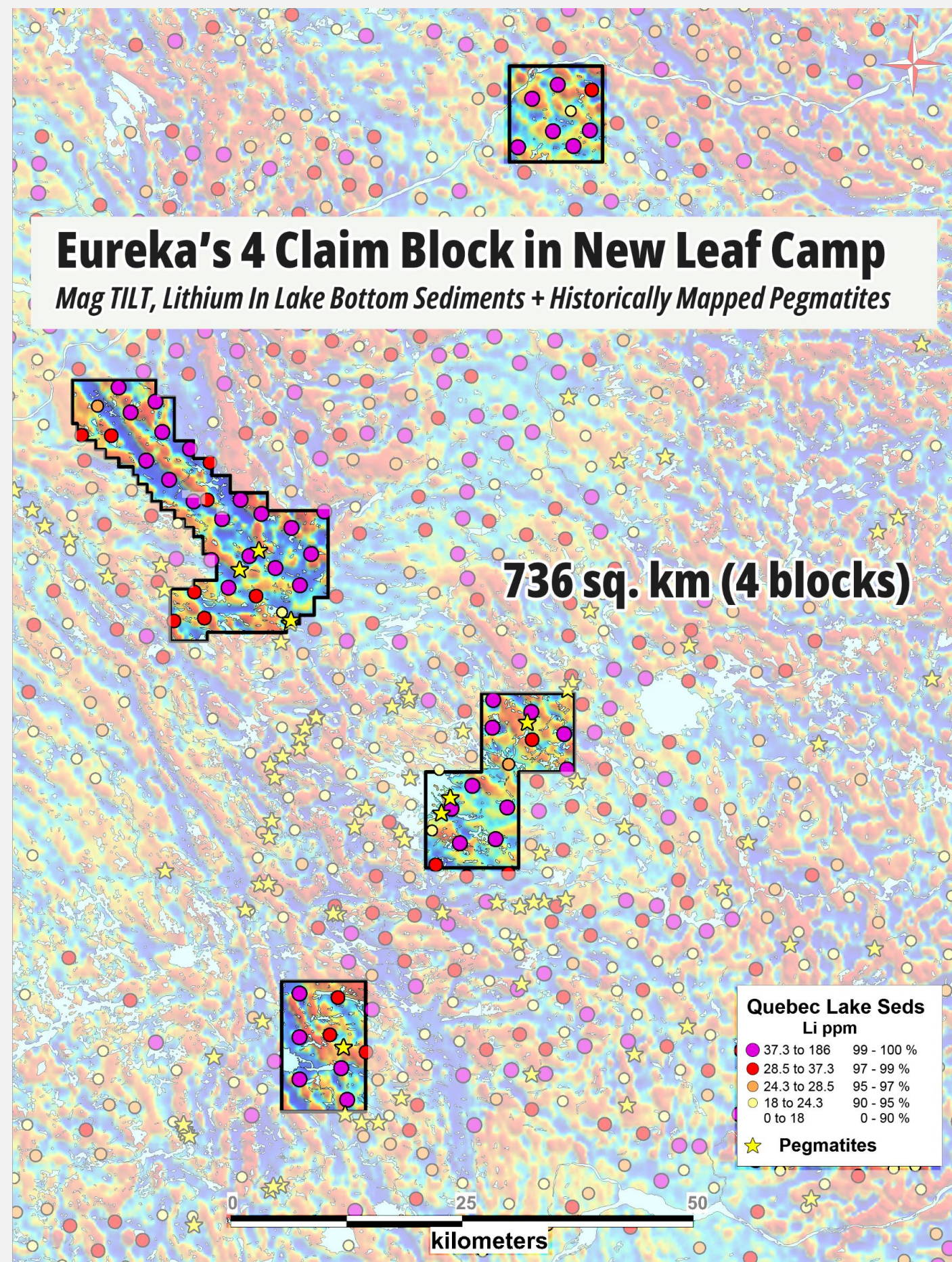
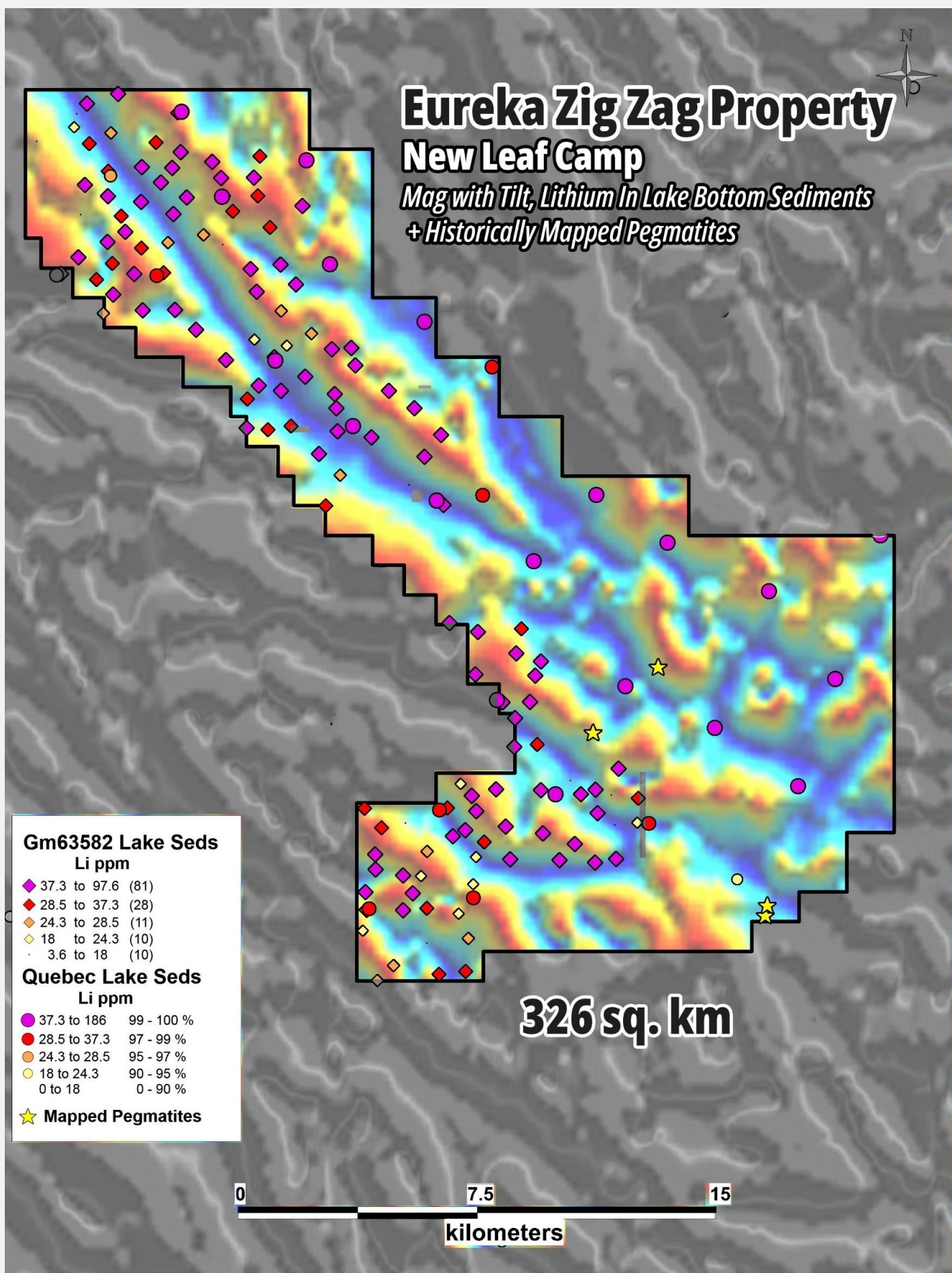
**Outcrop is Extensive**  
Across New Leaf Camp and throughout Nunavik

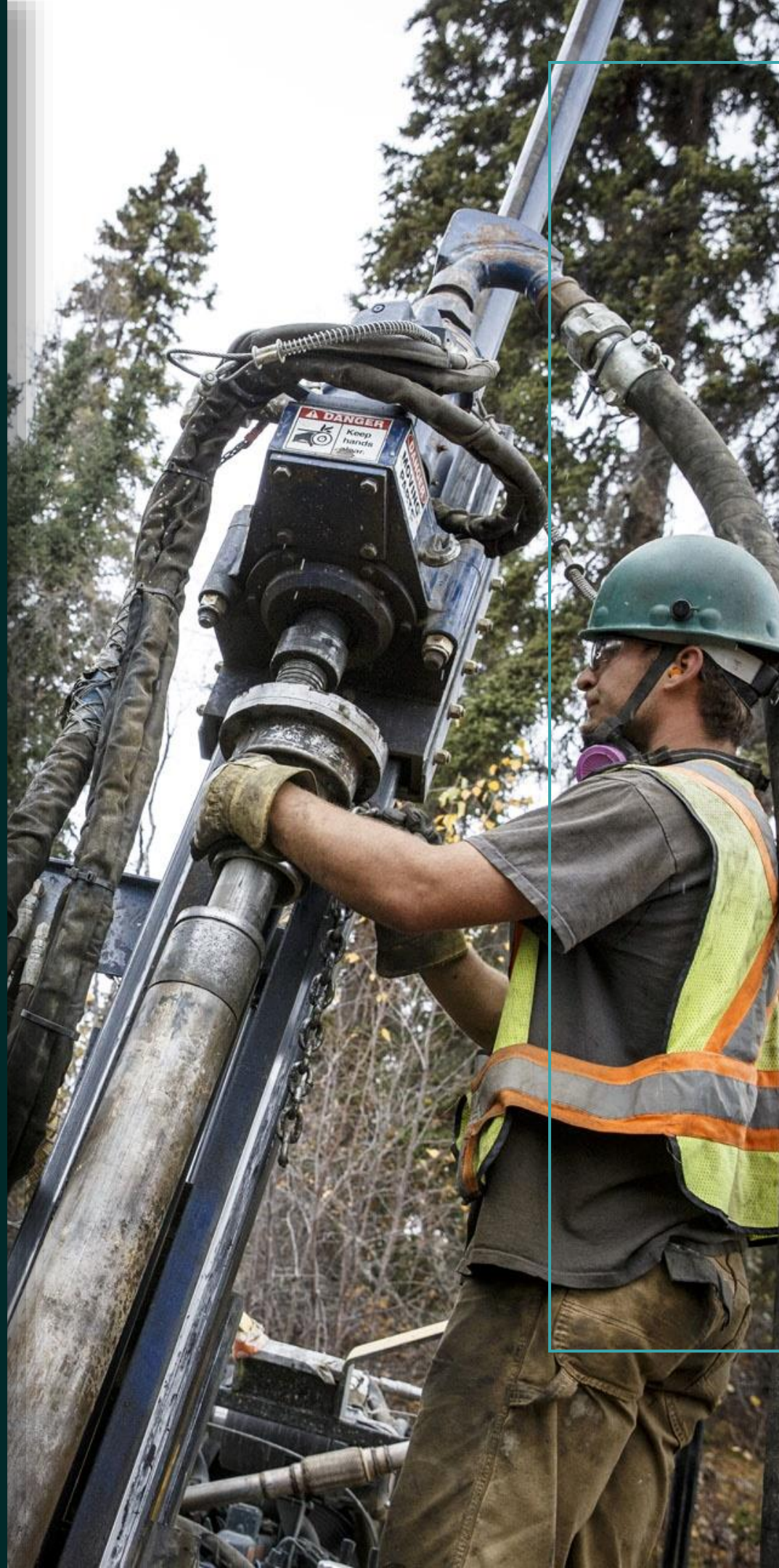
## ***New Leaf*** Lithium Camp

- Eureka owns 736 sq. km covering multiple claim blocks\*, including the “Zig Zag Property”, in the New Leaf Camp situated approximately 120 km southwest of the community of Tasiujaq and 350 km south of Raglan South.
- Zig Zag covers a 326 sq. km area and was originally staked to cover an anomalous NW trending structure associated with extremely high lake bottom sediment values. More than 30% of the lake sediment samples taken by the Quebec govt. at Zig Zag are in the 99th percentile for the province.
- There are multiple historically mapped pegmatites of interest throughout Zig Zag with this large claim block covering five major rock units.

*\*Subject to the completion of the announced financing and acquisition.*

# New Leaf Lithium Camp





## 2023 Plan – Poised For Discovery

- ✓ Eureka's 15-person GroundTruth Exploration crew field crew has just completed a successful first-pass program at the 229 sq. km Raglan South Property (refer to Aug. 23, 2023 news release). Information is being compiled for an update on this promising area in September;
- ✓ After a short break, crews will return to Raglan West in early September to commence a Phase 2 follow-up program to prioritize and execute on drill targets this season. Two dozen pegmatite units have been identified at Raglan West to date but not all areas of the 443 sq. km property have been fully covered;
- ✓ A strong lithium-cesium geochemical footprint and the high presence of metamorphosed supracrustal rocks provide a favorable geological setting for LCT pegmatite systems;
- ✓ GroundTruth is operating at high rates of efficiency in this northern environment which is allowing for an extension of the exploration season with ample fuel reserve and drill rig availability;
- ✓ Crews for Raglan West are stationed in the community of Salluit, a valuable logistics and supply centre for GroundTruth where Eureka's lithium project is just a short helicopter flight from a well established camp facility.





## First-Mover Advantage In Quebec's New Lithium Frontier - Nunavik

*Powering Up The North!*

**CEO:**

Jeffrey Wilson  
(604) 837-5440  
[info@EurekaLithiumCorp.com](mailto:info@EurekaLithiumCorp.com)

**Investor Contact:**

Doug McKay (DMA Group)  
(250) 567-0420  
[dmckay@EurekaLithiumCorp.com](mailto:dmckay@EurekaLithiumCorp.com)

CSE: **ERKA** | OTCQB: **UREKF** | FSE: **S580** | [EurekaLithiumCorp.com](http://EurekaLithiumCorp.com)